



CMA Testing and Certification Laboratories

廠商會檢定中心

TEST REPORT

Report No : AV0056711(9)

Date: 12 Oct 2017

Application No : LV032607(7)

Applicant : YOSHIRITSU CO., LTD.
1563 KOSHIBE,
OYODO YOSHINO,
NARA 638-0803
JAPAN

Sample Description : Two (2) submitted sample(s) stated to be:
Name of Parts :

- > - LaQ RED No.1-7
- > - LaQ BLUE No.1-7
- > - LaQ YELLOW No.1-7
- > - LaQ GREEN No.1-7
- > - LaQ PINK No.1-7
- > - LaQ SKY BLUE No.1-7
- > - LaQ ORANGE No.1-7
- > - LaQ LIME No.1-7
- > - LaQ WHITE No.1-7
- > - LaQ BLACK No.1-7
- > - LaQ BROWN No.1-7
- > - LaQ GRAY No.1-7
- > - LaQ CLEAR No.1-7
- > - LaQ CLEAR RED No.1-7
- > - LaQ CLEAR BLUE No.1-7
- > - LaQ CLEAR YELLOW No.1-7
- > - LaQ HAMACRON CONSTRUCTOR WHEEL
- > - LaQ HAMACRON CONSTRUCTOR SHAFT
- > - LaQ HAMACRON CONSTRUCTOR MINI WHEEL
- > - LaQ HAMACRON CONSTRUCTOR MINI SHAFT
- > - LaQ SWEET COLLECTION HEADBAND
- > - Blister Case ORANGE
- > - Blister Case RED
- > - Blister Case BLUE
- > - Blister Case PINK
- > - Blister Case LIME
- > - Plastic Container (Small)
- > - Plastic Container (Large)

For and on behalf of
CMA Industrial Development Foundation Limited

Authorized Signature :

Cheung Chok Ming
Deputy Manager
Toys and Material Division

Wan Leong Hang
Deputy Manager
Toys and Material Division

Page 1 of 28



CMA Testing and Certification Laboratories

廠商會檢定中心

TEST REPORT

Report No : AV0056711(9)

Date: 12 Oct 2017

Application No : LV032607(7)

Sample Description : Two (2) submitted sample(s) stated to be:

| <u>Item Name</u> | <u>JAN Code</u> |
|--------------------------------|-----------------------------------------------------------------------|
| (A) LaQ Mystical Beast DRAGON | 4952907004987 |
| (B) LaQ Mystical Beast WYVERN | 4952907004994 |
| Labelled Age Grading | : Age 5 years and up |
| Appropriate Age Grade | : Age 3 years and up (For EN71) Age 6 years and up (For ASTM F963) |
| Client's Requested Age Grading | : Not Requested |
| Tested Age Grade | : Age 3 years and up (For EN71) Age 5 years and up (For ASTM F963) |
| Country of Origin | : Japan |

Date Received : 03 Oct 2017.

Test Period : 04 Oct 2017 to 10 Oct 2017.

For and on behalf of
CMA Industrial Development Foundation Limited

Authorized Signature :

Cheung Chok Ming
Deputy Manager
Toys and Material Division

Wan Leong Hang
Deputy Manager
Toys and Material Division

Page 2 of 28



CMA Testing and Certification Laboratories

廠商會檢定中心

TEST REPORT

Report No : AV0056711(9)

Date: 12 Oct 2017

Application No : LV032607(7)

- Test Requested :
- I. Test in accordance with EN71 : Part 1 : 2014 - Physical and Mechanical Properties;
 - II. Test in accordance with EN71 : Part 2 : 2011 + A1 : 2014 – Flammability test;
 - III. Test in accordance with EN71 : Part 3 : 2013 + A1 : 2014 - Migration of certain elements (Aluminium, Antimony, Arsenic, Barium, Boron, Cadmium, Chromium (III), Chromium (VI), Cobalt, Copper, Lead, Manganese, Mercury, Nickel, Selenium, Strontium, Tin, Organic Tin and Zinc).
 - IV. ASTM F963-16
- Physical and Mechanical Tests
- Flammability Test;
- Heavy Elements Test (Clause 4.3.5).
 - V. Lead content in accordance with U.S. Consumer Product Safety Improvement Act of 2008 – Sec. 101 : Children’s Products Containing Lead; Lead Paint Rule.
 - VI. Regulation (EC) No. 1907/2006 of the European Parliament and of the Council, Annex XVII, Entry 23 and its amendment Regulation (EU) No. 494/2011 and No. 835/2012
- Cadmium content (formerly Directive 91/338/EEC).
 - VII. Regulation (EC) No. 1907/2006 of the European Parliament and of the Council, Annex XVII
- Phthalates contents (formerly Directive 2005/84/EC).
 - VIII. Phthalates contents in accordance with U.S. Consumer Product Safety Improvement Act of 2008 - Sec. 108 : Prohibition on Sale of Certain Products Containing Specified Phthalates.

For and on behalf of
CMA Industrial Development Foundation Limited

Authorized Signature :

Cheung Chok Ming
Deputy Manager
Toys and Material Division

Wan Leong Hang
Deputy Manager
Toys and Material Division

Page 3 of 28



CMA Testing and Certification Laboratories

廠商會檢定中心

TEST REPORT

Report No : AV0056711(9)

Date: 12 Oct 2017

Application No : LV032607(7)

Test Method : I, II & III. As stated in above specifications. Heavy metal analysis was determined by Atomic Absorption Spectrophotometry and/or Inductively Coupled Plasma Spectrometry (ICP-OES) and/or Inductively Coupled Plasma Mass Spectrometry (ICP-MS) and/or Liquid Chromatograph-Inductively Coupled Plasma Mass Spectrometry (LC-ICP-MS).

IV. As stated in the above specification. Acid digestion followed by Atomic Absorption Spectrophotometry analysis and/or Inductively Coupled Plasma Spectrometry (ICP-OES) analysis for heavy elements analysis. Diluted acid extraction followed by Inductively Coupled Plasma Spectrometry (ICP-OES) analysis for soluble heavy element analysis.

V & VI. Acid digestion followed by Atomic Absorption Spectrophotometry and/or Inductively Coupled Plasma Spectrometry (ICP-OES) analysis.

VII & VIII. Phthalate analysis was determined by Gas Chromatography.

Test Result : Refer to the result pages for details.

For and on behalf of
CMA Industrial Development Foundation Limited

Authorized Signature :

Cheung Chok Ming
Deputy Manager
Toys and Material Division

Wan Leong Hang
Deputy Manager
Toys and Material Division

Page 4 of 28



CMA Testing and Certification Laboratories

廠商會檢定中心

TEST REPORT

Report No : AV0056711(9)

Date: 12 Oct 2017

Application No : LV032607(7)

| Conclusion | Test Item | Result |
|------------|-------------------------------------------------------------------------------------------------------------------------------------------------------------------------------------------------------|----------------------------|
| I. | EN71 : Part 1 : 2014 | Passed |
| II. | EN71 : Part 2 : 2011 + A1 : 2014 | Passed |
| III. | EN71 : Part 3 : 2013+ A1 : 2014 | Passed |
| IV. | ASTM F963-11 - Physical and Mechanical Tests - Flammability Test - Heavy Elements Test (Clause 4.3.5) | Passed Passed Passed |
| V. | Lead content in accordance with U.S. Consumer Product Safety Improvement Act of 2008 - Sec. 101 for substrate materials. | Passed |
| VI. | Cadmium content in accordance with Regulation (EC) No. 1907/2006 of the European Parliament and of the Council, Annex XVII, Entry 23 and its amendment Regulation (EU) No. 494/2011 and No. 835/2012. | Passed |
| VII. | Phthalates contents in accordance with Regulation (EC) No. 1907/2006 of the European Parliament and of the Council, Annex XVII. | Passed |
| VIII. | Phthalates contents in accordance with U.S. Consumer Product Safety Improvement Act of 2008 - Sec. 108 : Prohibition on Sale of Certain Products Containing Specified Phthalates | Passed |

Remark : (i) The submitted samples were requested by the client to be tested in composite form. The results for composite sample are calculated based on the component with the least weight.

(ii) Sample No. 1 to 100 of this report were stated by the client that they were identical to sample No. 1 to 100 respectively of Report No. AV0034265(9).

The results of sample No. 1 to 100 of this report were transferred from sample No. 1 to 100 respectively of Report No. AV0034265(9) issued on 26 Jun 2017.

For and on behalf of
CMA Industrial Development Foundation Limited

Authorized Signature :

Cheung Chok Ming
Deputy Manager
Toys and Material Division

Wan Leong Hang
Deputy Manager
Toys and Material Division

Page 5 of 28



CMA Testing and Certification Laboratories

廠商會檢定中心

TEST REPORT

Report No : AV0056711(9)

Date: 12 Oct 2017

Application No : LV032607(7)

Test Result :

I. EN71 : Part 1 : 2014

| <u>Clause</u> | <u>Title/Description</u> | <u>Remark*</u> |
|---------------|------------------------------------------------|----------------|
| 4 | General requirements | |
| 4.1 | Material cleanliness | C |
| 4.7 | Edges | C |
| 4.8 | Points and metallic wires | C |
| 4.9 | Protruding parts | C |
| 6 | Packaging | C |
| 7 | Warnings, markings and instructions for use | |
| 7.1 | General | C |
| 7.2 | Toys not intended for children under 36 months | C |

II. EN71 : Part 2 : 2011 + A1 : 2014

| <u>Clause</u> | <u>Title/Description</u> | <u>Remark*</u> |
|---------------|--------------------------|----------------|
| 4.1 | General requirements | C |

Note : No cellulose nitrate and material with same behaviour in fire was detected

* Abbreviation : C = Complied



CMA Testing and Certification Laboratories

廠商會檢定中心

TEST REPORT

Report No : AV0056711(9)

Date: 12 Oct 2017

Application No : LV032607(7)

Test Result :

III. EN 71 : Part 3 : 2013 + A1 : 2014

Category III – Scraped-off toy material

| Element | Migration limit (mg/kg) | Result (mg/kg) | | | | | |
|--------------------------|-------------------------|----------------|-------|-------|-------|-------|-------|
| | | Sample | | | | | |
| | | 1 | 2 | 3 | 4 | 5 | 6 |
| Aluminium (Al) | 70,000 | <100 | <100 | <100 | <100 | <100 | <100 |
| Antimony (Sb) | 560 | <5 | <5 | <5 | <5 | <5 | <5 |
| Arsenic (As) | 47 | <5 | <5 | <5 | <5 | <5 | <5 |
| Barium (Ba) | 18,750 | <20 | <20 | <20 | <20 | <20 | <20 |
| Boron (B) | 15,000 | <100 | <100 | <100 | <100 | <100 | <100 |
| Cadmium (Cd) | 17 | <5 | <5 | <5 | <5 | <5 | <5 |
| Chromium (III) | 460 | <1 | <1 | <1 | <1 | <1 | <1 |
| Chromium (VI) | 0.2 | <0.15 | <0.15 | <0.15 | <0.15 | <0.15 | <0.15 |
| Cobalt (Co) | 130 | <5 | <5 | <5 | <5 | <5 | <5 |
| Copper (Cu) | 7,700 | <5 | <5 | <5 | <5 | <5 | <5 |
| Lead (Pb) | 160 | <5 | <5 | <5 | <5 | <5 | <5 |
| Manganese (Mn) | 15,000 | <100 | <100 | <100 | <100 | <100 | <100 |
| Mercury (Hg) | 94 | <5 | <5 | <5 | <5 | <5 | <5 |
| Nickel (Ni) | 930 | <5 | <5 | <5 | <5 | <5 | <5 |
| Selenium (Se) | 460 | <5 | <5 | <5 | <5 | <5 | <5 |
| Strontium (Sr) | 56,000 | <100 | <100 | <100 | <100 | <100 | <100 |
| Tin (Sn) | 180,000 | <2.5 | <2.5 | <2.5 | <2.5 | <2.5 | <2.5 |
| Organic tin [#] | 12 | <8 | <8 | <8 | <8 | <8 | <8 |
| Zinc (Zn) | 46,000 | <100 | <100 | <100 | <100 | <100 | <100 |



CMA Testing and Certification Laboratories

廠商會檢定中心

TEST REPORT

Report No : AV0056711(9)

Date: 12 Oct 2017

Application No : LV032607(7)

Test Result :

III. EN 71 : Part 3 : 2013 + A1 : 2014

Category III – Scraped-off toy material

| Element | Migration limit (mg/kg) | Result (mg/kg) | | | | | |
|--------------------------|-------------------------|----------------|-------|-------|-------|-------|-------|
| | | Sample | | | | | |
| | | 7 | 8 | 9 | 10 | 11 | 12 |
| Aluminium (Al) | 70,000 | <100 | <100 | <100 | <100 | <100 | <100 |
| Antimony (Sb) | 560 | <5 | <5 | <5 | <5 | <5 | <5 |
| Arsenic (As) | 47 | <5 | <5 | <5 | <5 | <5 | <5 |
| Barium (Ba) | 18,750 | <20 | <20 | <20 | <20 | <20 | <20 |
| Boron (B) | 15,000 | <100 | <100 | <100 | <100 | <100 | <100 |
| Cadmium (Cd) | 17 | <5 | <5 | <5 | <5 | <5 | <5 |
| Chromium (III) | 460 | <1 | <1 | <1 | <1 | <1 | <1 |
| Chromium (VI) | 0.2 | <0.15 | <0.15 | <0.15 | <0.15 | <0.15 | <0.15 |
| Cobalt (Co) | 130 | <5 | <5 | <5 | <5 | <5 | <5 |
| Copper (Cu) | 7,700 | <5 | <5 | <5 | <5 | <5 | <5 |
| Lead (Pb) | 160 | <5 | <5 | <5 | <5 | <5 | <5 |
| Manganese (Mn) | 15,000 | <100 | <100 | <100 | <100 | <100 | <100 |
| Mercury (Hg) | 94 | <5 | <5 | <5 | <5 | <5 | <5 |
| Nickel (Ni) | 930 | <5 | <5 | <5 | <5 | <5 | <5 |
| Selenium (Se) | 460 | <5 | <5 | <5 | <5 | <5 | <5 |
| Strontium (Sr) | 56,000 | <100 | <100 | <100 | <100 | <100 | <100 |
| Tin (Sn) | 180,000 | <2.5 | <2.5 | <2.5 | <2.5 | <2.5 | <2.5 |
| Organic tin [#] | 12 | <8 | <8 | <8 | <8 | <8 | <8 |
| Zinc (Zn) | 46,000 | <100 | <100 | <100 | <100 | <100 | <100 |



CMA Testing and Certification Laboratories

廠商會檢定中心

TEST REPORT

Report No : AV0056711(9)

Date: 12 Oct 2017

Application No : LV032607(7)

Test Result :

III. EN 71 : Part 3 : 2013 + A1 : 2014

Category III – Scraped-off toy material

| Element | Migration limit (mg/kg) | Result (mg/kg) | | | | | |
|--------------------------|-------------------------|----------------|-------|-------|-------|-------|-------|
| | | Sample | | | | | |
| | | 13 | 14 | 15 | 16 | 17 | 18 |
| Aluminium (Al) | 70,000 | <100 | <100 | <100 | <100 | <100 | <100 |
| Antimony (Sb) | 560 | <5 | <5 | <5 | <5 | <5 | <5 |
| Arsenic (As) | 47 | <5 | <5 | <5 | <5 | <5 | <5 |
| Barium (Ba) | 18,750 | <20 | <20 | <20 | <20 | <20 | <20 |
| Boron (B) | 15,000 | <100 | <100 | <100 | <100 | <100 | <100 |
| Cadmium (Cd) | 17 | <5 | <5 | <5 | <5 | <5 | <5 |
| Chromium (III) | 460 | <1 | <1 | <1 | <1 | <1 | <1 |
| Chromium (VI) | 0.2 | <0.15 | <0.15 | <0.15 | <0.15 | <0.15 | <0.15 |
| Cobalt (Co) | 130 | <5 | <5 | <5 | <5 | <5 | <5 |
| Copper (Cu) | 7,700 | <5 | <5 | <5 | <5 | <5 | <5 |
| Lead (Pb) | 160 | <5 | <5 | <5 | <5 | <5 | <5 |
| Manganese (Mn) | 15,000 | <100 | <100 | <100 | <100 | <100 | <100 |
| Mercury (Hg) | 94 | <5 | <5 | <5 | <5 | <5 | <5 |
| Nickel (Ni) | 930 | <5 | <5 | <5 | <5 | <5 | <5 |
| Selenium (Se) | 460 | <5 | <5 | <5 | <5 | <5 | <5 |
| Strontium (Sr) | 56,000 | <100 | <100 | <100 | <100 | <100 | <100 |
| Tin (Sn) | 180,000 | <2.5 | <2.5 | <2.5 | <2.5 | <2.5 | <2.5 |
| Organic tin [#] | 12 | <8 | <8 | <8 | <8 | <8 | <8 |
| Zinc (Zn) | 46,000 | <100 | <100 | <100 | <100 | <100 | <100 |



CMA Testing and Certification Laboratories

廠商會檢定中心

TEST REPORT

Report No : AV0056711(9)

Date: 12 Oct 2017

Application No : LV032607(7)

Test Result :

III. EN 71 : Part 3 : 2013 + A1 : 2014

Category III – Scraped-off toy material

| Element | Migration limit (mg/kg) | Result (mg/kg) | | | | | |
|--------------------------|-------------------------|----------------|-------|-------|-------|-------|-------|
| | | Sample | | | | | |
| | | 19 | 20 | 21 | 22 | 23 | 24 |
| Aluminium (Al) | 70,000 | <100 | <100 | <100 | <100 | <100 | <100 |
| Antimony (Sb) | 560 | <5 | <5 | <5 | <5 | <5 | <5 |
| Arsenic (As) | 47 | <5 | <5 | <5 | <5 | <5 | <5 |
| Barium (Ba) | 18,750 | <20 | <20 | <20 | <20 | <20 | <20 |
| Boron (B) | 15,000 | <100 | <100 | <100 | <100 | <100 | <100 |
| Cadmium (Cd) | 17 | <5 | <5 | <5 | <5 | <5 | <5 |
| Chromium (III) | 460 | <1 | <1 | <1 | <1 | <1 | <1 |
| Chromium (VI) | 0.2 | <0.15 | <0.15 | <0.15 | <0.15 | <0.15 | <0.15 |
| Cobalt (Co) | 130 | <5 | <5 | <5 | <5 | <5 | <5 |
| Copper (Cu) | 7,700 | <5 | <5 | <5 | <5 | <5 | <5 |
| Lead (Pb) | 160 | <5 | <5 | <5 | <5 | <5 | <5 |
| Manganese (Mn) | 15,000 | <100 | <100 | <100 | <100 | <100 | <100 |
| Mercury (Hg) | 94 | <5 | <5 | <5 | <5 | <5 | <5 |
| Nickel (Ni) | 930 | <5 | <5 | <5 | <5 | <5 | <5 |
| Selenium (Se) | 460 | <5 | <5 | <5 | <5 | <5 | <5 |
| Strontium (Sr) | 56,000 | <100 | <100 | <100 | <100 | <100 | <100 |
| Tin (Sn) | 180,000 | <2.5 | <2.5 | <2.5 | <2.5 | <2.5 | <2.5 |
| Organic tin [#] | 12 | <8 | <8 | <8 | <8 | <8 | <8 |
| Zinc (Zn) | 46,000 | <100 | <100 | <100 | <100 | <100 | <100 |



CMA Testing and Certification Laboratories

廠商會檢定中心

TEST REPORT

Report No : AV0056711(9)

Date: 12 Oct 2017

Application No : LV032607(7)

Test Result :

III. EN 71 : Part 3 : 2013 + A1 : 2014

Category III – Scraped-off toy material

| Element | Migration limit (mg/kg) | Result (mg/kg) | | | | | |
|--------------------------|-------------------------|----------------|-------|-------|-------|-------|-------|
| | | Sample | | | | | |
| | | 25 | 26 | 27 | 28 | 29 | 30 |
| Aluminium (Al) | 70,000 | <100 | <100 | <100 | <100 | <100 | <100 |
| Antimony (Sb) | 560 | <5 | <5 | <5 | <5 | <5 | <5 |
| Arsenic (As) | 47 | <5 | <5 | <5 | <5 | <5 | <5 |
| Barium (Ba) | 18,750 | <20 | <20 | <20 | <20 | <20 | <20 |
| Boron (B) | 15,000 | <100 | <100 | <100 | <100 | <100 | <100 |
| Cadmium (Cd) | 17 | <5 | <5 | <5 | <5 | <5 | <5 |
| Chromium (III) | 460 | <1 | <1 | <1 | <1 | <1 | <1 |
| Chromium (VI) | 0.2 | <0.15 | <0.15 | <0.15 | <0.15 | <0.15 | <0.15 |
| Cobalt (Co) | 130 | <5 | <5 | <5 | <5 | <5 | <5 |
| Copper (Cu) | 7,700 | <5 | <5 | <5 | <5 | <5 | <5 |
| Lead (Pb) | 160 | <5 | <5 | <5 | <5 | <5 | <5 |
| Manganese (Mn) | 15,000 | <100 | <100 | <100 | <100 | <100 | <100 |
| Mercury (Hg) | 94 | <5 | <5 | <5 | <5 | <5 | <5 |
| Nickel (Ni) | 930 | <5 | <5 | <5 | <5 | <5 | <5 |
| Selenium (Se) | 460 | <5 | <5 | <5 | <5 | <5 | <5 |
| Strontium (Sr) | 56,000 | <100 | <100 | <100 | <100 | <100 | <100 |
| Tin (Sn) | 180,000 | <2.5 | <2.5 | <2.5 | <2.5 | <2.5 | <2.5 |
| Organic tin [#] | 12 | <8 | <8 | <8 | <8 | <8 | <8 |
| Zinc (Zn) | 46,000 | <100 | <100 | <100 | <100 | <100 | <100 |

- Note :
- All results are in mg/kg
 - < denotes less than
 - ≥ denotes greater than or equal to
 - For samples of migrated chromium content lower than migration limit of chromium (VI), no speciation test for chromium (III) and chromium (VI) were conducted. The results were derived from that of total chromium
 - For samples of migrated tin content calculated as tributyl tin lower than migration limit of organic tin, no organic tin test was conducted. Organic tin results were derived from that of total tin
 - [#]Organic tin compounds under investigation are limited to methyltin, butyltin, dibutyltin, tributyltin, tetrabutyltin, mono-octyltin, dioctyltin, dipropyltin, diphenyltin and triphenyltin. Other organic tin compounds may also be present in toys



CMA Testing and Certification Laboratories

廠商會檢定中心

TEST REPORT

Report No : AV0056711(9)

Date: 12 Oct 2017

Application No : LV032607(7)

Test Result :

III. EN 71 : Part 3 : 2013 + A1 : 2014

Category III – Scraped-off toy material

| Sample | Description | Sample weight |
|--------|---------------------------------------------------------|---------------|
| 1 | Red plastic of red parts | ≥100 mg |
| 2 | Blue plastic of blue parts | ≥100 mg |
| 3 | Yellow plastic of yellow parts | ≥100 mg |
| 4 | Green plastic of green parts | ≥100 mg |
| 5 | Pink plastic of pink parts | ≥100 mg |
| 6 | Sky blue plastic of sky blue parts | ≥100 mg |
| 7 | Orange plastic of orange parts | ≥100 mg |
| 8 | Lime plastic of lime parts | ≥100 mg |
| 9 | White plastic of white parts | ≥100 mg |
| 10 | Black plastic of black parts | ≥100 mg |
| 11 | Brown plastic of brown parts | ≥100 mg |
| 12 | Grey plastic of grey parts | ≥100 mg |
| 13 | Clear plastic of clear parts | ≥100 mg |
| 14 | Clear red plastic of clear red parts | ≥100 mg |
| 15 | Clear blue plastic of clear blue parts | ≥100 mg |
| 16 | Clear yellow plastic of clear yellow parts | ≥100 mg |
| 17 | Greyish blue plastic of wheels | ≥100 mg |
| 18 | Bright black plastic of shaft | ≥100 mg |
| 19 | Dull white plastic of wheel of mini wheel | ≥100 mg |
| 20 | Black soft plastic of tires of mini wheel | ≥100 mg |
| 21 | Bright black plastic of shaft | ≥100 mg |
| 22 | Dull white plastic of headband | ≥100 mg |
| 23 | Bright orange plastic of orange case | ≥100 mg |
| 24 | Bright red plastic of red case | ≥100 mg |
| 25 | Bright blue plastic of blue case | ≥100 mg |
| 26 | Bright pink plastic of pink case | ≥100 mg |
| 27 | Bright green plastic of green case | ≥100 mg |
| 28 | Clear sky blue plastic of cover of small box, large box | ≥100 mg |
| 29 | Dull white plastic of locks of small box, large box | ≥100 mg |
| 30 | Clear plastic of body of small box, large box | ≥100 mg |



CMA Testing and Certification Laboratories

廠商會檢定中心

TEST REPORT

Report No : AV0056711(9)

Date: 12 Oct 2017

Application No : LV032607(7)

Test Result :

IV. ASTM F963-16

a. Physical and Mechanical Tests

| <u>Clause</u> | <u>Title/Description</u> | <u>Remark*</u> |
|---------------|----------------------------------------------------------------------------------------------------------------|----------------|
| 4.1 | Material Quality – Visual Inspection | C |
| 4.6.3 | Toys intended for children ≥ 3 years but < 6 years 16 CFR 1500.19 Small objects labeling requirement | C |
| 4.7 | Accessible edges 16 CFR 1500.49 Sharp metal or glass edges | C |
| 4.8 | Projections | C |
| 4.9 | Accessible points 16 CFR 1500.48 Sharp points | C |
| 4.12 | Plastic film | C |
| 4.17 | Wheels, tires, and axles | C |
| 5 | Labeling requirements | |
| 5.3 | Safety labeling requirements | C |
| 5.11 | Small objects, small balls, marbles, and balloons 16 CFR 1500.19 | C |
| 5.16 | Promotional materials | C |
| 7 | Producer's markings | |
| 7.1 | Producer's markings | C |

Remark : The sample(s) were subjected to the normal use and abuse tests in according with Clause 8.5 Normal Use Testing, 8.7 Impact test, 8.8 Torque test and 8.9 Tension test whichever was applicable.

Use and abuse test applied

| Test | Age Category, months | Test Parameters | 16 CFR Reference |
|--------------|----------------------|-----------------|------------------|
| Drop test | over 36 to 96 | 4 x 3 ft | 1500.53(b)(3) |
| Torque test | over 36 to 96 | 4 in-lbf | 1500.53(e) |
| Tension test | over 36 to 96 | 15 lbf | 1500.53(f) |



CMA Testing and Certification Laboratories

廠商會檢定中心

TEST REPORT

Report No : AV0056711(9)

Date: 12 Oct 2017

Application No : LV032607(7)

Test Result :

b. Flammability Test

| <u>Clause</u> | <u>Title/Description</u> | <u>Remark*</u> |
|---------------|-----------------------------------------------------------------------------------------------------------------------------------|----------------|
| 4.2 | Flammability 16 CFR 1500.3 (c) (6) (vi) <u>Materials other than textiles</u> Test method : Annex A5 (16 CFR 1500.44) | C |



CMA Testing and Certification Laboratories

廠商會檢定中心

TEST REPORT

Report No : AV0056711(9)

Date: 12 Oct 2017

Application No : LV032607(7)

Test Result :

c. Heavy Elements Test

| Clause | Title/Description | Remark* |
|----------------|---------------------------------------------|---------|
| 4.3.5.2 (2)(a) | Toy substrate materials, total lead content | C |

| | Test Item |
|---------------------------------|------------|
| | Total Lead |
| Maximum Permissible Level (ppm) | 100(**) |
| Sample | |
| #31 | <15 |
| #32 | <15 |
| #33 | <15 |
| #34 | <15 |
| #35 | <15 |
| #36 | <15 |
| #37 | <15 |
| #38 | <15 |
| #39 | <15 |
| #40 | <15 |

- Note :
- (***) 100 ppm limit applies to product produced on or after 14 Aug 2011
 - All results are in ppm
 - < denotes less than
 - # denotes composite sample

| Sample | Description |
|--------|---------------------------------------------------------------------------------------------------------------------------------------------------------------|
| #31 | Red plastic of red parts + Blue plastic of blue parts + Yellow plastic of yellow parts |
| #32 | Green plastic of green parts + Pink plastic of pink parts + Sky blue plastic of sky blue parts |
| #33 | Orange plastic of orange parts + Lime plastic of lime parts + White plastic of white parts |
| #34 | Black plastic of black parts + Brown plastic of brown parts + Grey plastic of grey parts |
| #35 | Clear plastic of clear parts + Clear red plastic of clear red parts + Clear blue plastic of clear blue parts |
| #36 | Clear yellow plastic of clear yellow parts + Greyish blue plastic of shaft + Bright black plastic of shaft |
| #37 | Dull white plastic of wheel of mini wheel + Black soft plastic of tires of mini wheel + Bright black plastic of shaft |
| #38 | Dull white plastic of headband + Bright orange plastic of orange case + Bright red plastic of red case |
| #39 | Bright blue plastic of blue case + Bright pink plastic of pink case + Bright green plastic of green case |
| #40 | Clear sky blue plastic of cover of small box, large box + Dull white plastic of locks of small box, large box + Clear plastic of body of small box, large box |



CMA Testing and Certification Laboratories

廠商會檢定中心

TEST REPORT

Report No : AV0056711(9)

Date: 12 Oct 2017

Application No : LV032607(7)

Test Result :

c. Heavy Elements Test

| <u>Clause</u> | <u>Title/Description</u> | <u>Remark*</u> |
|----------------|-------------------------------------------------|----------------|
| 4.3.5.2 (2)(b) | Toy substrate materials, soluble heavy elements | C |

| | <u>Test Item</u> | | | | | | | |
|---------------------------------|------------------|----|-----|----|----|----|----|------|
| | As | Hg | Se | Cd | Sb | Pb | Cr | Ba |
| Maximum Permissible Level (ppm) | 25 | 60 | 500 | 75 | 60 | 90 | 60 | 1000 |
| Sample | | | | | | | | |
| 41 | <5 | <5 | <5 | <5 | <5 | <5 | <5 | <20 |
| 42 | <5 | <5 | <5 | <5 | <5 | <5 | <5 | <20 |
| 43 | <5 | <5 | <5 | <5 | <5 | <5 | <5 | <20 |
| 44 | <5 | <5 | <5 | <5 | <5 | <5 | <5 | <20 |
| 45 | <5 | <5 | <5 | <5 | <5 | <5 | <5 | <20 |
| 46 | <5 | <5 | <5 | <5 | <5 | <5 | <5 | <20 |
| 47 | <5 | <5 | <5 | <5 | <5 | <5 | <5 | <20 |
| 48 | <5 | <5 | <5 | <5 | <5 | <5 | <5 | <20 |
| 49 | <5 | <5 | <5 | <5 | <5 | <5 | <5 | <20 |
| 50 | <5 | <5 | <5 | <5 | <5 | <5 | <5 | <20 |
| 51 | <5 | <5 | <5 | <5 | <5 | <5 | <5 | <20 |
| 52 | <5 | <5 | <5 | <5 | <5 | <5 | <5 | <20 |
| 53 | <5 | <5 | <5 | <5 | <5 | <5 | <5 | <20 |
| 54 | <5 | <5 | <5 | <5 | <5 | <5 | <5 | <20 |
| 55 | <5 | <5 | <5 | <5 | <5 | <5 | <5 | <20 |
| 56 | <5 | <5 | <5 | <5 | <5 | <5 | <5 | <20 |
| 57 | <5 | <5 | <5 | <5 | <5 | <5 | <5 | <20 |
| 58 | <5 | <5 | <5 | <5 | <5 | <5 | <5 | <20 |
| 59 | <5 | <5 | <5 | <5 | <5 | <5 | <5 | <20 |
| 60 | <5 | <5 | <5 | <5 | <5 | <5 | <5 | <20 |
| 61 | <5 | <5 | <5 | <5 | <5 | <5 | <5 | <20 |
| 62 | <5 | <5 | <5 | <5 | <5 | <5 | <5 | <20 |
| 63 | <5 | <5 | <5 | <5 | <5 | <5 | <5 | <20 |
| 64 | <5 | <5 | <5 | <5 | <5 | <5 | <5 | <20 |
| 65 | <5 | <5 | <5 | <5 | <5 | <5 | <5 | <20 |
| 66 | <5 | <5 | <5 | <5 | <5 | <5 | <5 | <20 |
| 67 | <5 | <5 | <5 | <5 | <5 | <5 | <5 | <20 |
| 68 | <5 | <5 | <5 | <5 | <5 | <5 | <5 | <20 |
| 69 | <5 | <5 | <5 | <5 | <5 | <5 | <5 | <20 |
| 70 | <5 | <5 | <5 | <5 | <5 | <5 | <5 | <20 |



CMA Testing and Certification Laboratories

廠商會檢定中心

TEST REPORT

Report No : AV0056711(9)

Date: 12 Oct 2017

Application No : LV032607(7)

Test Result :

c. Heavy Elements Test

| Clause | Title/Description | Remark* |
|----------------|-------------------------------------------------|---------|
| 4.3.5.2 (2)(b) | Toy substrate materials, soluble heavy elements | C |

- Note :
- All results are in ppm
 - ppm denotes part per million by weight
 - < denotes less than
 - ≥ denotes greater than or equal to
 - As = Arsenic; Hg = Mercury; Se = Selenium; Cd = Cadmium; Sb = Antimony; Pb = Lead; Cr = Chromium; Ba = Barium

| Sample | Description | Sample weight |
|--------|-------------------------------------------------------------|---------------|
| 41 | Red plastic of red parts | ≥100 mg |
| 42 | Blue plastic of blue parts | ≥100 mg |
| 43 | Yellow plastic of yellow parts | ≥100 mg |
| 44 | Green plastic of green parts | ≥100 mg |
| 45 | Pink plastic of pink parts | ≥100 mg |
| 46 | Sky blue plastic of sky blue parts | ≥100 mg |
| 47 | Orange plastic of orange parts | ≥100 mg |
| 48 | Lime plastic of lime parts | ≥100 mg |
| 49 | White plastic of white parts | ≥100 mg |
| 50 | Black plastic of black parts | ≥100 mg |
| 51 | Brown plastic of brown parts | ≥100 mg |
| 52 | Grey plastic of grey parts | ≥100 mg |
| 53 | Clear plastic of clear parts | ≥100 mg |
| 54 | Clear red plastic of clear red parts | ≥100 mg |
| 55 | Clear blue plastic of clear blue parts | ≥100 mg |
| 56 | Clear yellow plastic of clear yellow parts | ≥100 mg |
| 57 | Greyish blue plastic of wheels | ≥100 mg |
| 58 | Bright black plastic of shaft | ≥100 mg |
| 59 | Dull white plastic of wheel of mini wheel | ≥100 mg |
| 60 | Black soft plastic of tires of mini wheel | ≥100 mg |
| 61 | Bright black plastic of shaft | ≥100 mg |
| 62 | Dull white plastic of headband | ≥100 mg |
| 63 | Bright orange plastic of orange case | ≥100 mg |
| 64 | Bright red plastic of red case | ≥100 mg |
| 65 | Bright blue plastic of blue case | ≥100 mg |
| 66 | Bright pink plastic of pink case | ≥100 mg |
| 67 | Bright green plastic of green case | ≥100 mg |
| 68 | Clear sky blue plastic of cover box of small box, large box | ≥100 mg |
| 69 | Dull white plastic of locks of small box, large box | ≥100 mg |
| 70 | Clear plastic of body of small box | ≥100 mg |

* Abbreviation : C = Complied



CMA Testing and Certification Laboratories

廠商會檢定中心

TEST REPORT

Report No : AV0056711(9)

Date: 12 Oct 2017

Application No : LV032607(7)

Test Result :

V. Lead content in accordance with U.S. Consumer Product Safety Improvement Act of 2008 – Sec. 101 : Children’s Products Containing Lead; Lead Paint Rule

For materials and substrate

| | Test Item |
|---------------------------|------------|
| | Total Lead |
| Permissible Limit (mg/kg) | 100(*) |
| Sample | |
| #71 | <15 |
| #72 | <15 |
| #73 | <15 |
| #74 | <15 |
| #75 | <15 |
| #76 | <15 |
| #77 | <15 |
| #78 | <15 |
| #79 | <15 |
| #80 | <15 |

- Note :
- (*) 100 ppm limit applies to product produced on or after 14 Aug 2011
 - All results are in mg/kg
 - < denotes less than
 - # denotes composite sample

| Sample | Description |
|--------|---------------------------------------------------------------------------------------------------------------------------------------------------------------|
| #71 | Red plastic of red parts + Blue plastic of blue parts + Yellow plastic of yellow parts |
| #72 | Green plastic of green parts + Pink plastic of pink parts + Sky blue plastic of sky blue parts |
| #73 | Orange plastic of orange parts + Lime plastic of lime parts + White plastic of white parts |
| #74 | Black plastic of black parts + Brown plastic of brown parts + Grey plastic of grey parts |
| #75 | Clear plastic of clear parts + Clear red plastic of clear red parts + Clear blue plastic of clear blue parts |
| #76 | Clear yellow plastic of clear yellow parts + Greyish blue plastic of wheels + Bright black plastic of shaft |
| #77 | Dull white plastic of wheel of mini wheel + Black soft plastic of tires of mini wheel + Bright black plastic of shaft |
| #78 | Dull white plastic of headband + Bright orange plastic of orange case + Bright red plastic of red case |
| #79 | Bright blue plastic of blue case + Bright pink plastic of pink case + Bright green plastic of green case |
| #80 | Clear sky blue plastic of cover of small box, large box + Dull white plastic of locks of small box, large box + Clear plastic of body of small box, large box |



CMA Testing and Certification Laboratories

廠商會檢定中心

TEST REPORT

Report No : AV0056711(9)

Date: 12 Oct 2017

Application No : LV032607(7)

Test Result :

VI. Regulation (EC) No. 1907/2006 of the European Parliament and of the Council, Annex XVII, Entry 23 and its amendment Regulation (EU) No. 494/2011 and No. 835/2012 - Cadmium content (formerly Directive 91/338/EEC).

For plastic material

| | <u>Test item</u> |
|-----------------------------------|------------------|
| | Total Cadmium |
| Maximum permissible level (mg/kg) | 100 |
| Sample | |
| #81 | <5 |
| #82 | <5 |
| #83 | <5 |
| #84 | <5 |
| #85 | <5 |
| #86 | <5 |
| #87 | <5 |
| #88 | <5 |
| #89 | <5 |
| #90 | <5 |

Note :
 • All results are in mg/kg
 • < denotes less than
 • # denotes composite sample

| Sample | Description |
|--------|---------------------------------------------------------------------------------------------------------------------------------------------------------------|
| #81 | Red plastic of red parts + Blue plastic of blue parts + Yellow plastic of yellow parts |
| #82 | Green plastic of green parts + Pink plastic of pink parts + Sky blue plastic of sky blue parts |
| #83 | Orange plastic of orange parts + Lime plastic of lime parts + White plastic of white parts |
| #84 | Black plastic of black parts + Brown plastic of brown parts + Grey plastic of grey parts |
| #85 | Clear plastic of clear parts + Clear red plastic of clear red parts + Clear blue plastic of clear blue parts |
| #86 | Clear yellow plastic of clear yellow parts + Greyish blue plastic of wheels + Bright black plastic of shaft |
| #87 | Dull white plastic of wheel of mini wheel + Black soft plastic of tires of mini wheel + Bright black plastic of shaft |
| #88 | Dull white plastic of headband + Bright orange plastic of orange case + Bright red plastic of red case |
| #89 | Bright blue plastic of blue case + Bright pink plastic of pink case + Bright green plastic of green case |
| #90 | Clear sky blue plastic of cover of small box, large box + Dull white plastic of locks of small box, large box + Clear plastic of body of small box, large box |



CMA Testing and Certification Laboratories

廠商會檢定中心

TEST REPORT

Report No : AV0056711(9)

Date: 12 Oct 2017

Application No : LV032607(7)

Test Result :

VII & VIII. Regulation (EC) No. 1907/2006 of the European Parliament and of the Council, Annex XVII - Phthalates contents and U.S. Consumer Product Safety Improvement Act of 2008 - Sec. 108

| Sample | Test Item | | | | | |
|--------|-----------|-------|-------|-------|-------|-------|
| | DEHP | DBP | BBP | DINP | DIDP | DNOP |
| #91 | <0.01 | <0.01 | <0.01 | <0.01 | <0.01 | <0.01 |
| #92 | <0.01 | <0.01 | <0.01 | <0.01 | <0.01 | <0.01 |
| #93 | <0.01 | <0.01 | <0.01 | <0.01 | <0.01 | <0.01 |
| #94 | <0.01 | <0.01 | <0.01 | <0.01 | <0.01 | <0.01 |
| #95 | <0.01 | <0.01 | <0.01 | <0.01 | <0.01 | <0.01 |
| #96 | <0.01 | <0.01 | <0.01 | <0.01 | <0.01 | <0.01 |
| #97 | <0.01 | <0.01 | <0.01 | <0.01 | <0.01 | <0.01 |
| #98 | <0.01 | <0.01 | <0.01 | <0.01 | <0.01 | <0.01 |
| #99 | <0.01 | <0.01 | <0.01 | <0.01 | <0.01 | <0.01 |
| #100 | <0.01 | <0.01 | <0.01 | <0.01 | <0.01 | <0.01 |

Requirement of Regulation (EC) No. 1907/2006, Annex XVII

1. Concentration of DEHP, DBP and BBP of plasticized materials in toys and childcare articles shall not exceed 0.1% by weight.
2. Concentration of DINP, DIDP and DNOP of plasticized materials in toys and childcare articles which can be placed in the mouth by children shall not exceed 0.1% by weight.

Requirement of CPSIA

It shall be unlawful for any person to manufacture for sale, offer for sale, distribute in commerce, or import into the United States :

1. Any children's toy or child care article that contains concentrations of more than 0.1% of DEHP, DBP or BBP.
2. Any children's toy that can be placed in a child's mouth or child care article that contains concentrations of more than 0.1% of DINP, DIDP or DNOP.

- Note :
- All results are in % w/w
 - % w/w denotes percentage by weight
 - < denotes less than
 - # denotes composite sample
 - DEHP = Di (2-ethylhexyl) Phthalate; DBP = Dibutyl Phthalate; BBP = Butyl Benzyl Phthalate; DINP = Diisononyl Phthalate; DIDP = Diisodecyl Phthalate; DNOP = Di-n-octyl Phthalate



CMA Testing and Certification Laboratories

廠商會檢定中心

TEST REPORT

Report No : AV0056711(9)

Date: 12 Oct 2017

Application No : LV032607(7)

Test Result :

VII & VIII. Regulation (EC) No. 1907/2006 of the European Parliament and of the Council, Annex XVII
- Phthalates contents and U.S. Consumer Product Safety Improvement Act of 2008 - Sec. 108

| Sample | Description |
|--------|---------------------------------------------------------------------------------------------------------------------------------------------------------------|
| #91 | Red plastic of red parts + Blue plastic of blue parts + Yellow plastic of yellow parts |
| #92 | Green plastic of green parts + Pink plastic of pink parts + Sky blue plastic of sky blue parts |
| #93 | Orange plastic of orange parts + Lime plastic of lime parts + White plastic of white parts |
| #94 | Black plastic of black parts + Brown plastic of brown parts + Grey plastic of grey parts |
| #95 | Clear plastic of clear parts + Clear red plastic of clear red parts + Clear blue plastic of clear blue parts |
| #96 | Clear yellow plastic of clear yellow parts + Greyish blue plastic of wheels + Bright black plastic of shaft |
| #97 | Dull white plastic of wheel of mini wheel + Black soft plastic of tires of mini wheel + Bright black plastic of shaft |
| #98 | Dull white plastic of headband + Bright orange plastic of orange case + Bright red plastic of red case |
| #99 | Bright blue plastic of blue case + Bright pink plastic of pink case + Bright green plastic of green case |
| #100 | Clear sky blue plastic of cover of small box, large box + Dull white plastic of locks of small box, large box + Clear plastic of body of small box, large box |



CMA Testing and Certification Laboratories

廠商會檢定中心

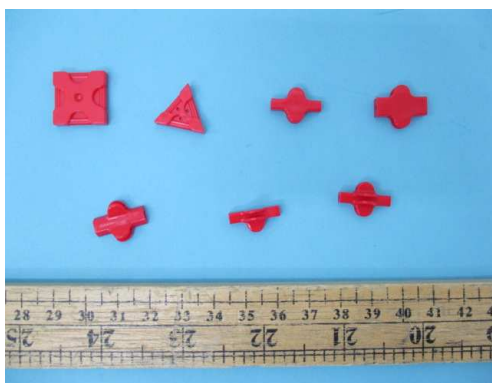
TEST REPORT

Report No : AV0056711(9)

Date: 12 Oct 2017

Application No : LV032607(7)

Appendix



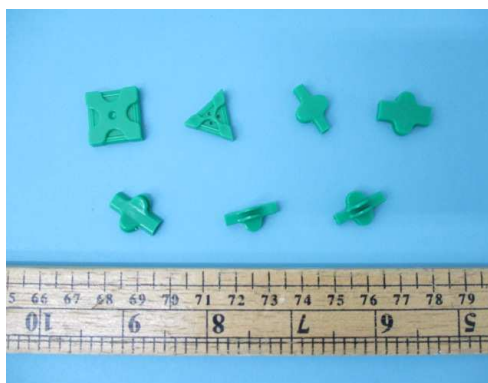
LaQ RED No.1-7



LaQ BLUE No.1-7



LaQ YELLOW No.1-7



LaQ GREEN No.1-7



LaQ PINK No.1-7



LaQ SKY BLUE No.1-7



CMA Testing and Certification Laboratories

廠商會檢定中心

TEST REPORT

Report No : AV0056711(9)

Date: 12 Oct 2017

Application No : LV032607(7)

Appendix



LaQ ORANGE No.1-7



LaQ LIME No.1-7



LaQ WHITE No.1-7



LaQ BLACK No.1-7



LaQ BROWN No.1-7



LaQ GRAY No.1-7



CMA Testing and Certification Laboratories

廠商會檢定中心

TEST REPORT

Report No : AV0056711(9)

Date: 12 Oct 2017

Application No : LV032607(7)

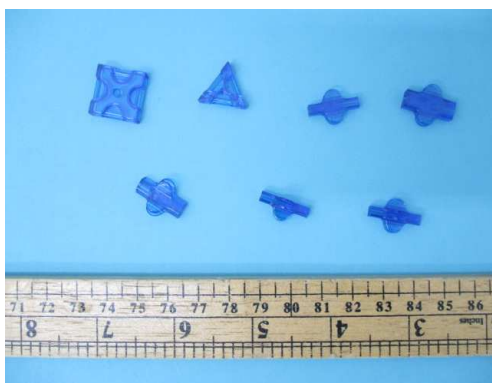
Appendix



LaQ CLEAR No.1-7



LaQ CLEAR RED No.1-7



LaQ CLEAR BLUE No.1-7



LaQ CLEAR YELLOW No.1-7



CMA Testing and Certification Laboratories

廠商會檢定中心

TEST REPORT

Report No : AV0056711(9)

Date: 12 Oct 2017

Application No : LV032607(7)

Appendix



LaQ HAMACRON CONSTRUCTOR WHEEL



LaQ HAMACRON CONSTRUCTOR SHAFT



LaQ HAMACRON CONSTRUCTOR MINI WHEEL



LaQ HAMACRON CONSTRUCTOR MINI SHAFT



LaQ SWEET COLLECTION HEADBAND



CMA Testing and Certification Laboratories

廠商會檢定中心

TEST REPORT

Report No : AV0056711(9)

Date: 12 Oct 2017

Application No : LV032607(7)

Appendix



Blister Case ORANGE



Blister Case RED



Blister Case BLUE



CMA Testing and Certification Laboratories

廠商會檢定中心

TEST REPORT

Report No : AV0056711(9)

Date: 12 Oct 2017

Application No : LV032607(7)

Appendix



Blister Case PINK



Blister Case LIME



Plastic Container (Small)

Plastic Container (Large)



CMA Testing and Certification Laboratories

廠商會檢定中心

TEST REPORT

Report No : AV0056711(9)

Date: 12 Oct 2017

Application No : LV032607(7)

Appendix



(A)



(B)

***** End of Report *****